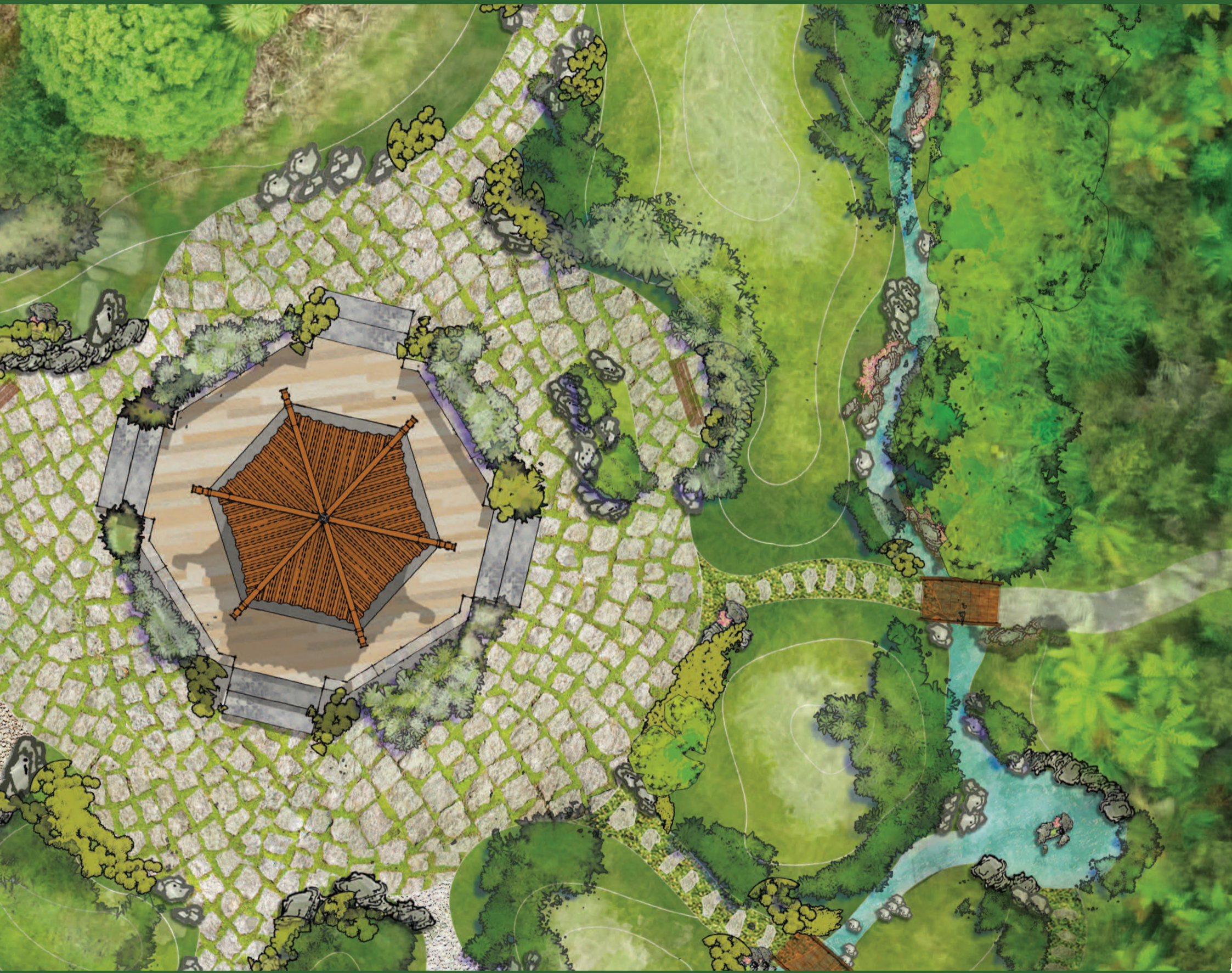




CHRIS GLASSON
LANDSCAPE ARCHITECTS

KUMARA CHINESE MINERS MEMORIAL RESERVE



Concept Design
February 2016

1.0 SITE CONTEXT



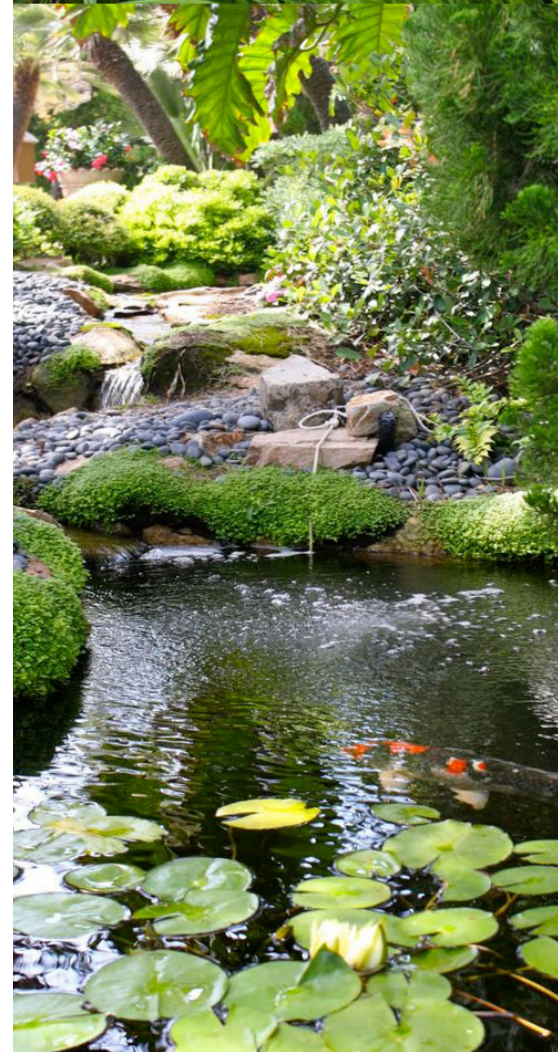
2.0 DESIGN STATEMENT

Kumara Chinese reserve is a place with a strong gold mining history to tell, on a high profile site in Kumara on SH 73.

The design vision aims to honour both the past of Chinese golden miners and also the rustic and unique west coast natural environment, by proposing a traditional Chinese style garden using typical Chinese structures and authentic locally sourced materials.

The overall design concept is inspired by classical intimate Chinese gardens which aim to express the harmony between humans and nature. The design follows a traditional Chinese garden design principle which is called “see big from small” by using limited space and creating undulating mounds which expresses an artistic conception of limitlessness.

This Chinese mining reserve aims to be a gateway feature for both the town and the Westland District; as well as a multifunctional place for residents, visitors, school and educational groups to engage and learn about the rich history of the area and it’s connection to the Chinese community.



3.0 OVERALL CONCEPT



RESERVE BOUNDARY

FIFTH STREET ROAD RESERVE BOUNDARY

4.0 DESIGN ANALYSIS



5.0 KEY FEATURES



KEY FEATURE:

- 1. MAIN ENTRANCE
- 2. EXISTING STORMWATER CULVERT
- 3. CARPARK
- 4. FEATURED WALL
- 5. BONSAI GARDEN
- 6. SCULPTURE GARDEN
- 7. PICNIC AREA
- 8. BRIDGE
- 9. ROCK AND WATER POND
- 10. BRIDGE
- 11. CENTRAL CHINESE PAVILION
- 12. PROPOSED BOUNDARY PLANTING
- 13. EXISTING BOUNDARY PLANTING
- 14. MEDITATION GARDEN
- 15. BOARDWALK AND WATER POND

6.0 IMPRESSION IMAGES

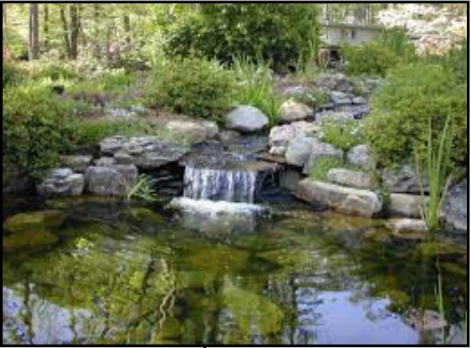
10. FEATURED MOON GATE

The repeated moon gate follows a traditional Chinese garden design principle - the beginning echoes the end. This gate defines the end of this garden, and also frames the view of the water garden inside.



11. WATER POND WITHIN MEDITATION GARDEN

The water feature provides a harmonious space for contemplation while listening to the sound of the small waterfall, and commemorating the past Chinese gold miners.



12. WATER STREAM

Streams in a Chinese garden always follow a winding course, and are hidden from time to time by rustic rocks and vegetation. The contour of the stormwater stream follows the existing contour, flowing from existing outlet into the drain at the neighbor's property.



4. RUSTIC BENCH



Simple and bold design of garden bench using earthy and rustic material to represent authentic West Coast style.

5. CHINESE PAVILION

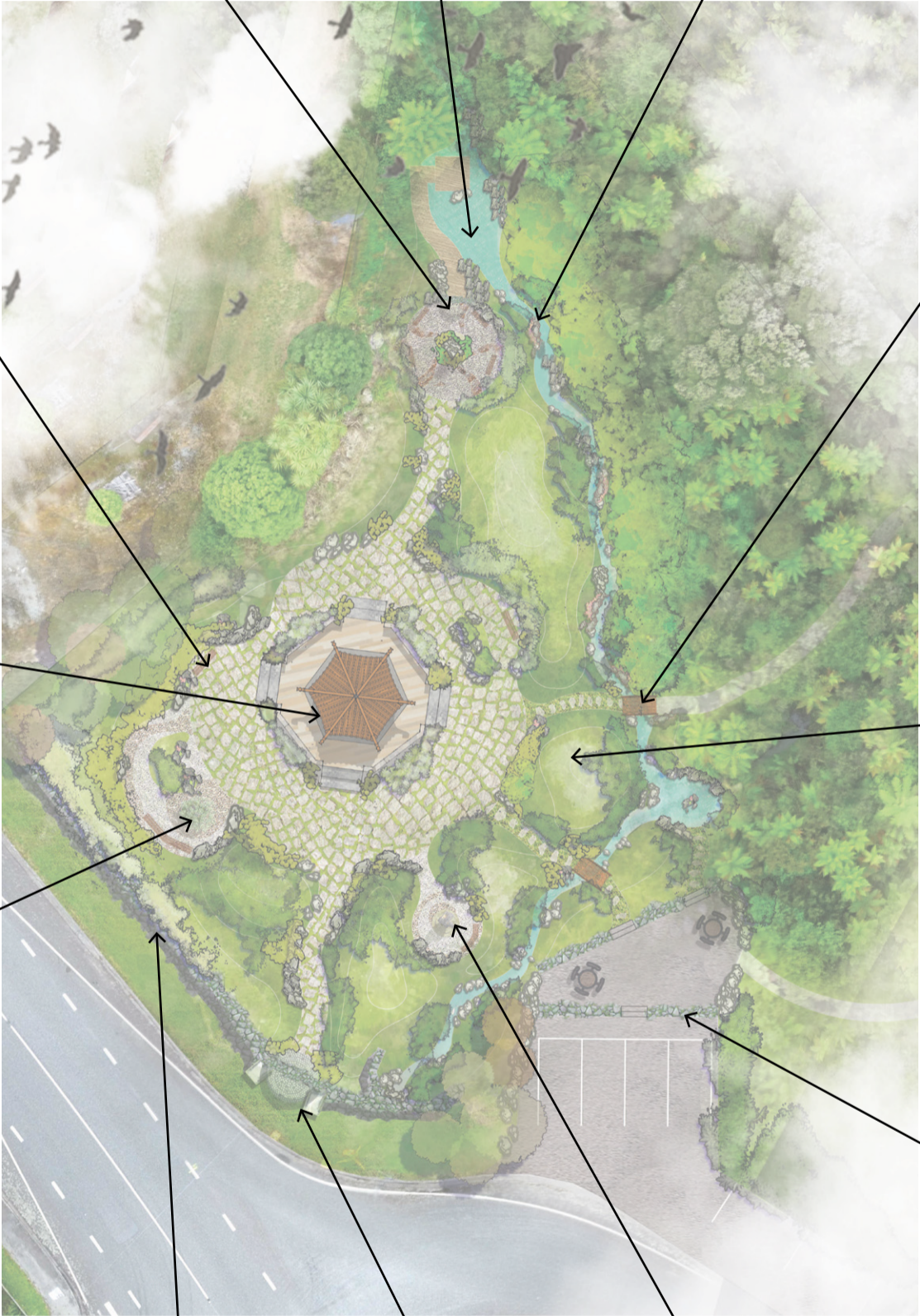


Chinese style Pavilion defines the main character of the garden. It faces in four directions to open up a panoramic view of the garden.

6. BONSAI GARDEN



As one of the traditional Chinese art forms with a long history, Bonsai garden is a blend of Chinese aesthetics and literature, which provides elegant and artistic feel to visitors.



7. TIMBER BRIDGE



Red painted timber bridge arches over the winding stream, leading visitors into a historic bush walking loop.

8. MOUNDING WITH ROCKS



The artificial mountains are mounded around the whole garden. They are an integral element of Chinese classical gardens. They define both the enclosure and openness of spaces. Moving in between these mounds will create a changing experience.

9. FEATURED RETAINING WALL



Retaining wall to be constructed with locally sourced rocks. Given that the level changes from the road into the garden, establishing stone walls will effectively divide the area into multi-functional spaces, such as carpark, picnic area, etc.



1. STONE WALL WITH MOON WINDOW

The Moon window is another typical example of types of the embellishment of an openings. It frames the view of the internal garden, creating interesting contrasts between outside and inside.



2. MOON GATE ENTRANCE

As a traditional architectural element in a Chinese garden, the moon gate serves as a very inviting entrance into the centerpiece. Using locally sourced tailing stone to create the Chinese feature is a meaningful way to celebrate both cultures.



3. VERNACULAR SCULPTURE

A featured locally made sculpture to illustrate history of the gold mining age at Kumara.

7.0 MATERIAL PALETTE

CONCRETE SLAB WITH MOSS



Growing moss in between randomly cut concrete slabs will give a strong sense of localism in West Coast. This paving pattern will be mainly used in the central pedestrian area.

TIMBER



Timber board will be used for small bridge and boardwalk, creating an earthy and authentic feeling.

ROCK



Rock and water material in a Chinese garden convey the Yin Yang, and the virtues of patience. Locally sourced rock will be used throughout this garden to create false mountains and landscapes.

PEBBLE MOSAIC PAVING



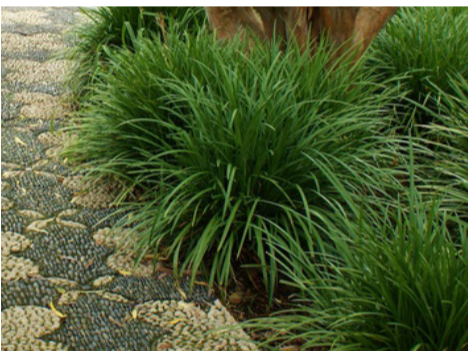
Hand made pebble mosaic paving reflects the craftsmanship and detailing required to replicate an authentic Chinese garden. They are to be used in some small defined spaces such as the bonsai garden.

GRAVEL



Gravel will be used in the carparking and picnic areas.

GRASS



Planting low-growing grasses instead of lawn will greatly reduce the level of maintenance. In the meantime, soft grass plantings waving in the breeze, with randomly placed rocks will create a typical Chinese garden view.

LOCAL TAILING STONE



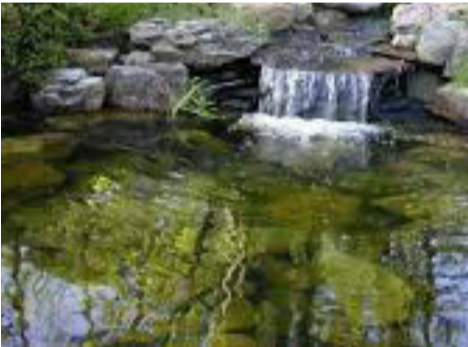
Taking full advantages of the legacy from the gold mining past; some garden features and elements will be made from tailing stones, which will effectively remind visitors gold mining era at Kumara in the 19th century.

CHINESE MADE FEATURE



The key Chinese features in the garden include a pair of mythical stone lions and the central pavilion, etc, which are manufactured in China.

WATER



Water management with level changes solves the major stormwater issue on site. In conjunction with existing contours, the creation of natural looking stream and pond play both functional and visual roles.



CHRIS GLASSON
LANDSCAPE ARCHITECTS

Chris Glasson Landscape Architects Ltd, 149 Victoria Street, Christchurch 8141, New Zealand
Tel: (64) 03 365 4599 email: info@chrisglasson.co.nz Web: www.chrisglasson.com